

# INTABA RIDGE

— SECURE ECO - ESTATE —

WIDE OPEN SPACES, UNDER  
AFRICAN SKIES

**LOCAL SCHOOLS**  
EPWORTH AND ST CHARLES  
COLLEGE

MEET THE  
**SMITH FAMILY**

INSPIRED LIVING NATURALLY

EDITION 5



14 BUSHBUCK WAY R4 495 000



Expansive 519m<sup>2</sup> home on one of the best locations in Intaba Ridge. This brand new mansion is all about family living on a grand scale. Amazing features include massive open-plan kitchen with pantry and scullery.

15 INTABA DRIVE R3 700 000



3 bedroom, 2 bathroom home with beautiful finishes overlooking the dam. Newly built and is truly what one can expect from living under African skies with wildlife on your doorstep. **NO TRANSFER DUTY.**

3 INTABA DRIVE R4 175 000



The open-plan lounge flows onto the wooden deck overlooking your own private rim flow pool, fire pit and dam in the Estate. The 4 bedrooms are spacious and all en-suite. Upon completion this home will offer luxury at its best. **NO TRANSFER DUTY.**

7 INTABA DRIVE R3 700 000



3 Bedroom (all en-suite) with open-plan living area flowing out onto a Balau deck with fire pit, built-in braai and rim-flow pool to soak away the stresses of modern day life!

9 INTABA DRIVE R3 450 000



3 or 4 bedroomed home on a level 2,500 m<sup>2</sup> property with large open-plan living spaces. Beautiful views and the wildlife roams at your front door. This home is beautifully finished with modern touches. Own this gem today! **NO TRANSFER DUTY.**

13 INTABA DRIVE R4 200 000



Stunning 4 bedroom (all en-suite) family home with lovely internal flow through the living areas onto a Balau deck, fire-pit and rim-flow pool. Set on a prime plot in this beautiful estate.



**Drew Henwood**  
**082 421 5753**  
**drew@remaxmidlands.co.za**



**Madalo Kruger**  
**083 409 6302**  
**madalo@remaxmidlands.co.za**

# INTABA RIDGE CONTENTS

6

## WIDE OPEN SPACES

Sagnelli Architects showcase how architecture can amalgamate design and nature effortlessly.

14

## ST CHARLES COLLEGE

A Proud and Longstanding tradition of education.

18

## MEET THE FAMILY

We take a look into the lives of the Smith family and their gorgeous home.

22

## EPWORTH SCHOOL

Celebrating 120 years of educational excellence.

25

## COFFEEBERRY

The local coffee shop undergoes an exciting transformation.



18



14

## CONTACT INFORMATION



**INTABA RIDGE**  
— SECURE ECO - ESTATE —



Should you require any information regarding the estate, please contact any of the following persons:

### ESTATE MANAGER

Gavin Sibbald | (033) 940 0362

### ESTATE ADMIN

Laurin Jansen van Rensburg | admin@intabaridge.co.za

### ESTATE GATEHOUSE

(033) 940 0368

### SALES

(087) 195 0701 or sales@intabaridge.co.za

### ADVERTISING SALES & MARKETING

Kamal | (084) 306 1414 or marketing@intabaridge.co.za

### ESTATE FINANCE

Mike Acutt | accounts@intabaridge.co.za

### IN - HOUSE JOURNALIST

Courtney Matthew

### PUBLISHER

Lorinda Scott

FabMags Publications CC | lorinda@fabmags.co.za

**OFFICE NUMBER** | (032) 946 0357

**FAX** | 086 605 0098

**WEBSITE** | www.fabmags.co.za

**OFFICE CONTACT DETAILS** | Suite 104, San Hall Office Park, Kirsty Close, Ballito, KZN

*While every effort has been made to ensure the accuracy of the contents FABMAGS cannot be held responsible for any omission or errors, or for any misfortune, injury or damages that may arise therefrom.*

*FabMags is a privately owned and funded company.*



# BAY UNION

FINANCIAL SERVICES



**Proud brokers to Intaba Ridge Homeowners Association and residents**



**Insurance**



**Financial Planning**



**Employee Benefits**



**Corporate Risk**

We specialise in insurance solutions for Residential Estates and we are extremely proud to confirm that we are Brokers to the following notable Estates in KZN:

**Cotswold Downs Luxury Estate | Mount Edgecombe Residential Estate | The Pearls of Umhlanga  
Simbithi Eco-Estate | Brettenwood Residential Estate | La Domaine Retirement Estate**

 0861 229 123  [info@bayunion.co.za](mailto:info@bayunion.co.za)  Lion Match Office Park, 892 Umgeni Rd, Berea, Durban

*As a licensed financial services provider, we comply strictly with the FAIS Act and abide by that Act's Code of Good Conduct.*

# RED ALERT GUARDING

**RED ALERT**



Service Solutions

CAREFULLY SELECTED  
**SECURITY OFFICERS**  
OF THE **HIGHEST QUALITY**

With branches in the Eastern Cape, Gauteng, KZN and Western Cape, we are your trusted local partner, providing carefully selected security officers of the highest quality. Our hands on, service orientated approach is driven by a passion for excellence. Using the latest technology, we deliver consistently upon this commitment - allowing us to develop as the Preferred Choice for Guarding.



[redalert.co.za](http://redalert.co.za) [redalert@redalert.co.za](mailto:redalert@redalert.co.za)

**LEVEL 1 B-BBEE**

**TAKING ACTION TO EARN TRUST**



# FROM THE DEVELOPER



**T**his has been a busy year thus far for Intaba Ridge Secure-Eco Estate.

We are extremely excited about the completion of the first Sagnelli designed home package, which has been developed as a showhouse for Intaba Ridge. This home design is one of the 4 home package designs done by Sagnelli Architects. These home designs are elegant and flexible and can be easily adjusted to suite a variety of tastes and budgets. Since these packages have been launched, it is extremely encouraging that eight of these packages have already been approved by the Design Review Committee with four already under construction.

The Intaba Ridge phase two application has now reached an

important stage with the submission of the final Basic Assessment report to the department on the 16th of August. After a thorough and exhaustive public consultation period, a series of additional expert reports was commissioned. This resulted in the vast majority of interested and affected parties supporting the final report, including the proposed mitigation measures and expert opinions. The department now has 109 days from the 16th of August to make a final decision. We have already had fantastic interest and requests for the retirement component of phase two and as such we hope to receive a positive response as soon as possible.

Despite the sluggish economy, building at Intaba Ridge has continued at an impressive pace.

At the time of writing, there are now 53 houses completed or under construction, with a further five under design.

Finally, we are extremely grateful for the late summer rains, that have topped up most of the dams on the estate and around the province. Let's hope this trend continues into spring and summer to fill up the dams all over the province.

*Brendan Falkson*

**Director of Sign Power Investments,  
the developer of Intaba Ridge Secure  
Eco - Estate.**

# Wide open spaces...

## UNDER AFRICAN SKIES - ON SHOW





Last year, the developer of Intaba Ridge, decided to build a showhouse designed by Sagnelli Architects in order to showcase the way architecture could be used to maximise the wide open spaces and natural beauty of the estate.

Sagnelli Associate Architects was established in 1993 and has grown to become a leading architectural practice in KZN, specializing in residential estate architecture. During this time, Sagnelli have been actively involved as Design

Review Committee architects or approved architects in some of KZN's best known developments including Mt. Edgecombe, Zimbali, Izinga Estate and The Executive. They are currently on the Design Review Committee of Zimbali and Izinga Estate, where they wrote up the design guidelines. They have featured in various national magazines, with three homes having been featured on Top Billing. They have also won the DHS Media Centre, Architectural award in 2001 and the Bloomberg African Property Award for Architecture in 2010.

After Sagnelli architects were appointed to update the development, they created a series of home packages for Intaba Ridge that would reflect verandah architecture, inspired by modern bush-lodge luxury.

The packages were created to ensure flexibility through simplicity, using cost effective building finishes and designs. Due to the elegantly simple roof-lines and modern open plan design, each home package can be adapted to increase or decrease accommodation to suit.



*The stunning kitchens and vanities were done by Advance Interiors while the aluminium windows and magnificent folding stack doors were supplied and installed by Verulam Aluminium.*



dare to bring your dreams to *life*



## SAGNELLI ASSOCIATE ARCHITECTS

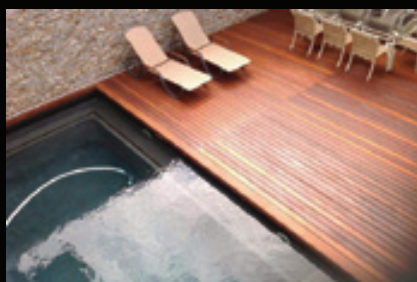
49 Richefond Circle | Suite 1 | Ridgeside Office Park | Umhlanga Rocks  
Tel: 031 536 8160 Cell: 082 772 4426 info@sagnelli.com  
www.sagnelli.com



## Hardwood Lumber

Suppliers Of Hard & Soft Wood

Premium Quality Timber at Affordable Prices



- » Decking Structure
- » Balau and Massaranduba deckboards
- » Marine Plywood
- » Commercial Ply
- » Engineered Oak Flooring

- » Oriented Strand Board
- » Solid Meranti Doors
- » Hardware and Deck Sealants
- » Machine Shop: For all your specialised requirements



Ballito Branch  
Tel/Fax: 032 947 1758  
Cell: 060 993 6214  
ballito@hardwoodlumber.co.za  
15 Acacia Park, 1 Falcon Rd  
Shakas Head, Ballito

Pinetown Branch  
Tel: 031 701 1392  
Sales@hardwoodlumber.co.za  
Corner of Blair & Oliver Rd  
Pinetown



*The balu timber decking was supplied by Hardwood Lumber with installation by Tholokule Sundecks*

In addition, by making minor changes, the look and feel can be customized to match a wide range of tastes, ensuring that no two houses look the same.

The site that was chosen for the showhouse, had magnificent views of Spurwing Dam and the surrounding open bush-veld and therefore the **Idube** (Zebra) unit

was chosen for the showhouse design. This is a four-bedroom, en-suite home design which maximises the integration of inside and outside living spaces.



The home's design takes full advantage of the magnificent views, through the use of large, extra height sliding stacking aluminium doors, exposed roof

trusses and glazed gables. The large verandah helps protect the home from extremely hot weather and also provides an insulation layer against extreme cold. The

#### **Selected list of suppliers**

*Aluminium Doors and windows:*  
**Verulam Aluminium** Contact Ruben on 083 777 5637

*Kitchen, BICs & vanities:* **Advanced Interiors** Contact Terence on 083 342 8006

*Timber for Decking & Pergolas (Supply):* **Hardwood Lumber** Contact Clint on 082 464 9982

*Timber for Decking & Pergolas (Installation):* **Tholukuhle Sundecks** Contact Alfred on 083 941 8857

flexibility of design allows for the addition of an extra lounge, granny flat or servants quarters and the open glazed roof gables and exposed trusses, can also be changed to dutch gables with open-glazing or a hipped roof, to dramatically change the look and feel of the home and to suite the required budget.

The interior of the show-house was designed to enhance the open-plan flow and relaxed Intaba Ridge lifestyle, through the use of lighter shades of whites and greys. The use of natural sandstone cladding on both exterior and interior walls and patio doors in all the bedrooms and living areas, bring the outdoors in.

The main bedroom boasts magnificent views of both the bushveld hill-side and the dam, whilst the open plan dining and lounge area opens up onto a timber deck and magnificent rim-flow pool. Hansgrohe taps, Geberit concealed cisterns and Caesarstone kitchen tops and vanities add the required level of finish to reflect bush-lodge luxury. This is truly Inspired living... Naturally. 🌿



*The wood for the pergolas was supplied by Hardwood Lumber with installation by Tholokule Sundecks*





*Geberit cisterns, Hansgrohe taps and frameless shower doors evoke a sense of bush lodge luxury*



CONTACT US

[www.jbatearc.com](http://www.jbatearc.com)

229 Lambert Rd, Morningside,  
Durban, South Africa, 4051

email:[justin@jbatearc.com](mailto:justin@jbatearc.com)  
tel: 072 340 0060





# ST CHARLES COLLEGE

**S**t Charles College offers unsurpassed value in education. We work hard to remain relevant and to provide a global learning experience for boys aged three to 19 years.

Scrummies, the Pre-Primary School at St Charles College, has teachers who are highly qualified and understand the learning needs of little boys. Designed and built specially as a place of learning for pre-school children, our Pre-Primary School is securely enclosed in its own

1200 square metre section of our campus. Wide, airy verandas, mature shady trees and plenty of lush lawns create a tranquil, happy and attractive learning environment where boys love their teachers and school; and where solid Christian foundations keep character and values in priority.

To begin their learning adventure, age-appropriate pre-reading and pre-writing skills are introduced in Grade 000 and extended in Grade 0. Knowledge and confidence in numbers is encouraged and

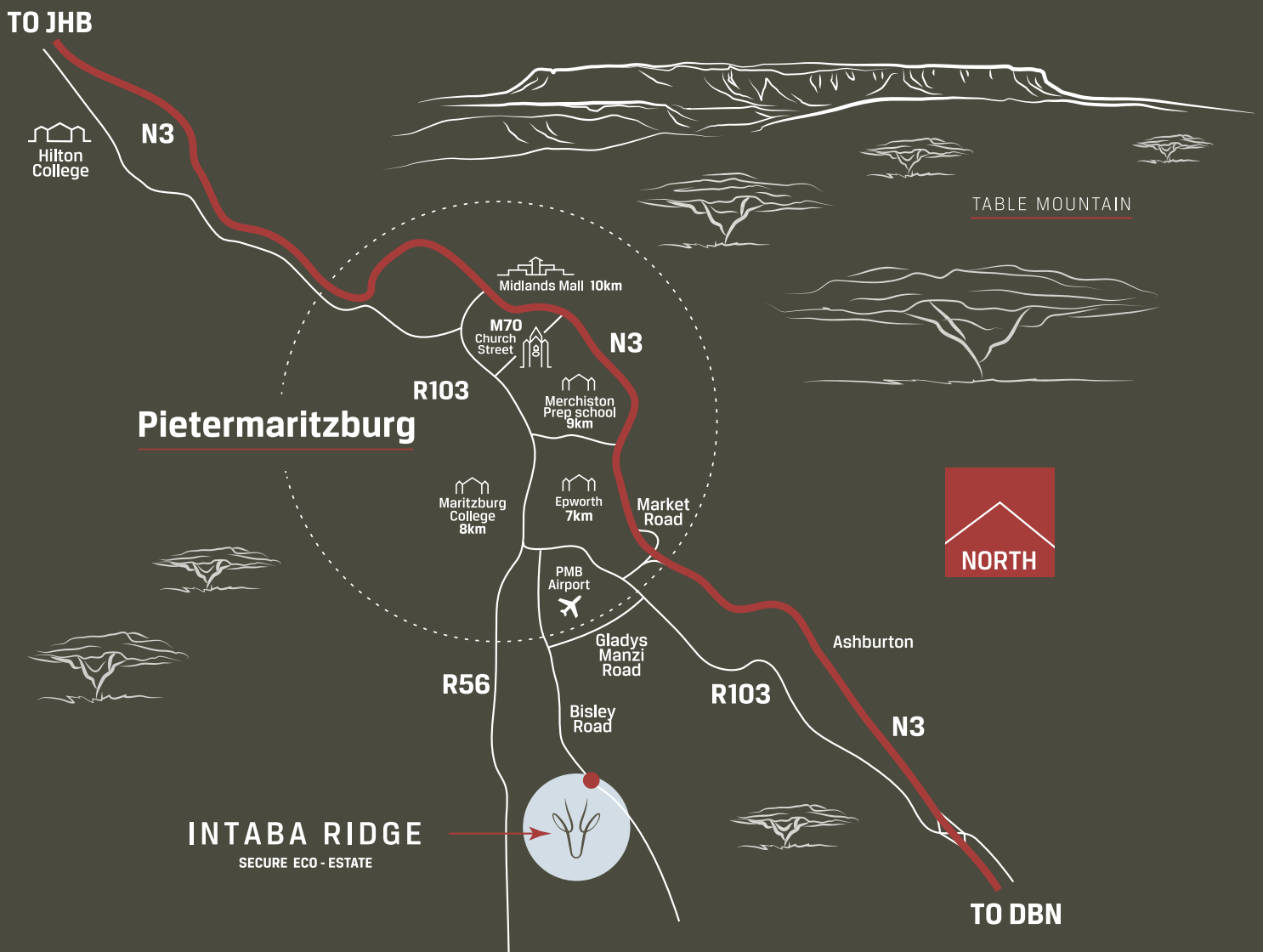
enhanced through the help of grade-appropriate Maths material - the same as that followed in Singapore, the world's leading Mathematics system.

As part of the value offered at St Charles College, after-care with close adult supervision is provided Monday to Friday after classes until 5:00pm for our Pre-Primary boys within the facility. Holiday care camps assist working parents to manage busy lives and boys love the extra play-time. ✨

“Some days just turn out to be great days”



# INTABA RIDGE

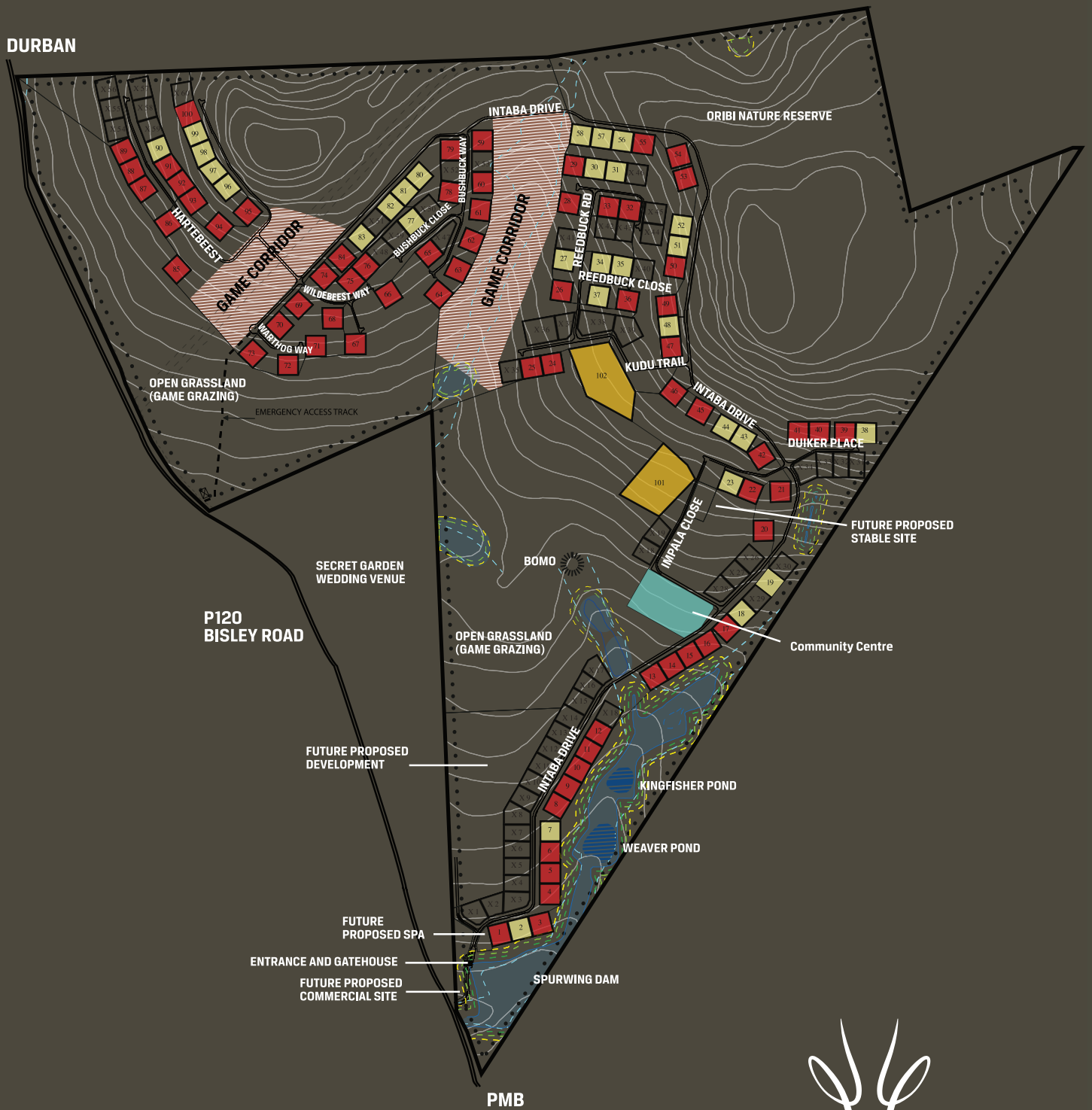


**6km** from PMB Girl's High  
**6km** from Hayfields mall  
**7km** from Maritzburg College  
**7.5km** from Epworth  
**8.5km** from St. Johns  
**8.5km** from St. Charles

**10km** from Wykeham  
**10km** from Merchiston  
**10km** from Cordwalles  
**5km** from PMB Airport  
**9.5km** from PMB Golf Course  
**11km** from Midlands Mall



# ESTATE MAP



**INTABA RIDGE**  
— SECURE ECO - ESTATE —



# MEET THE **SMITH** FAMILY

In this edition we meet Shane, Cheryllyn, Shaylyn and Cody Smith, the family who can't get enough of the outdoor life.

WORDS COURTNEY MATTHEW



**M**eet Shane and Cheryllyn Smith, a couple formally from Pietermaritzburg who grew up together in the Woodlands neighbourhood. The couple started dating back in 1988 and were married six years later. Their first child, daughter Shaylyn is 22 and their son Cody is now 18. The family love spending time together in the great outdoors and share a love for camping, hiking, fishing and of course, travelling. Shane and Cheryllyn decided to start a family

and had their daughter Shaylyn in February 1996 after two years of marriage, "she is now in her final year Dietetics at Pretoria University" share the proud parents. Following in hot pursuit, four years later, Cody was born and is now in Matric at Maritzburg College.

The happily married couple of 24 years enjoys spending quality time together, but also have their individual hobbies. Shane is a greasemonkey in every sense of

the word, enjoying his motorcycles but also revels in the open air so you would often find him on a golf course, cycling or on the water fishing. Cheryllyn finds enjoyment on outdoor walks and Zumba.. The Smith's run their own company, Fire Quip, which specialises in fire fighting equipment installations. Shane is heavily involved in operations, while Cheryllyn handles all the hard stuff, Finances and HR.

The family has lived on the estate for the past two years and although they love being outdoors, they enjoy spending just as much time at home together. They were first introduced to the estate five years ago through their camping friends who live on the estate, "they brought us to the estate on our way home from a camping trip to view their home that was being built at the time" they say. After driving around and viewing the different sites, they were lucky enough to be on their current site just at sunset, "we saw the potential for our new home as the sun set and in the distance, the city lights began to flicker like distant stars", they knew they were home. The family loves entertaining guests, be it over for dinners, lunches or even breakfast "to us, 'Full House' means 'Happy Home', everyone who visits cannot wait to return" they share.

The family has put a lot of thought into the layout of their family home. The sunrise and setting can be enjoyed from various spots in the house and the two most popular rooms are their gym and home theatre. The master bedroom gives a 180° view so sunrises can be enjoyed from the comfort of the bed or the sunset marvelled from a warm jacuzzi after a tough day at the office.



Cody, Shaylyn, Cheryllyn and Shane



Cody and Shaylyn

Intaba estate is the place to call home for the Smith's as it suits their needs for so many different reasons. The first being their love for the open air and outside activities, "we love the fact that if we feel like walking or cycling the trails are available are a plus for the outdoor enthusiast" says the family, "the scenery is absolutely beautiful and you encounter nature at its best". The family also have a soft spot for the animals around them and love "watching the animals grow from birth to adults it's priceless" they tell us. They are also pretty ecstatic about the family of Zebra setting up camp on their front lawn on a regular basis. They enjoy visiting game reserves at every chance they get so "living at Intaba is the closest you can get to this lifestyle, it's like having heaven in your backyard as the sun sets and the animal sounds in the evening dark come alive" they tell us.

Another major plus for the family is that although they quite like living hidden away from the hustle

The scenery is absolutely beautiful and you encounter nature at its best.

and bustle of the city, at the same time are conveniently close at 6 km away, should they need to pop out for weekend grocery shopping.

Family and deep friendships are what's most important to the Smith family. Living in Intaba Estate has enabled them to share their beautiful home and charming family spirit with the people they care for most "which is what makes living in Intaba extra special" shares the Smith Family. ♻️



**GARLICHE**  **BOUSFIELD**  
ATTORNEYS, NOTARIES AND CONVEYANCERS

The year 1867 heralded the advent of two significant finds in our country – the discovery of diamonds, and the birth of law firm, Garlicke & Bousfield.

For 150 years, we have adhered to the principle of being identified as the gem of law advocacy in South Africa.



A CELEBRATION OF  
SUSTAINED EXCELLENCE

[www.gb.co.za](http://www.gb.co.za)

7 Torsvale Crescent La Lucia Ridge Office Estate  
Tel: +27 31 570 5300 • Fax: +27 31 570 5301 • Email: [mailur@gb.co.za](mailto:mailur@gb.co.za)



# EPWORTH CELEBRATES

---

## 120 YEARS 1898-2018



**E**pworth, an independent school with a Methodist ethos, celebrates 120 years of offering a rich, holistic education based on its founding values of Faith, Compassion and Courage. Established by two pioneering women, the school has always operated ahead of the times, taking brave decisions, engaging in leading-

edge thinking and embracing diversity. In 1979, Epworth was one of the first schools in the country to open its doors to all races, in defiance of the apartheid government's laws.

Located in Pietermaritzburg on a spacious, park-like campus, the school educates boys and girls from



Grades RRR to 7, and girls only from Grades 8 to 12.

At Epworth, we strive to meet the needs of all pupils within a nurturing, vibrant and Christian environment, encouraging them to realise their full potential in all spheres of school life.

Although academics play a central role, learning extends beyond the bounds of the classroom with opportunities to participate in a diverse range of cultural, sporting and spiritual activities.

Service is embedded in the culture of Epworth and pupils in all grades have the chance to engage meaningfully with local communities through the varied outreach activities endorsed by the school.

A comfortable and secure boarding establishment provides a home-from-home to weekly and termly boarders. Friendly boarding staff ensure all boarders' physical, emotional and social needs are met.

As Epworth commemorates 120 years and looks to the future, its vision **is to free the potential in individuals to become relevant, resilient and ethical leaders who contribute to our ever-changing world.**

"What a wonderful opportunity it is to celebrate the 120-year anniversary of Epworth's existence. Little were the courageous founders, Miss Emily Lowe and Miss Emma Mason, aware 120 years ago that there would be such a valuable educational asset that is thriving and still true to their ideals and

objectives." Chairman of the Epworth Board, Peter Keyworth.

"My hope is that I can give those I serve opportunities to be innovative without fear of failure; allow the individual to realise his/her potential; establish the framework in which others can function effectively; and allow the ethos and values of the school to be reflected in the teachers, staff and pupils." Head of School, Laura Bekker

"It is a privilege to be at a school that still holds the fundamental principles of what education should involve: creating children with good self-esteem who can meet the challenges that lie ahead with confidence, allowing it to shine through their unique skills, talents and abilities." Principal of the Preparatory School, Reynard White. ✨



**SCRAP**  
Your Partner in Metal Recycling

34 Cb Downes Rd, Mkondeni  
94 Moses Mabida Rd, Campsdrift  
38 Rosedale Rd, Mountain Rise  
65 Pine St, Central Pmb  
486 Boom St, Pmb  
www.globalscrap.co.za  
Tel: 062 952 6741 / 082 302 1687

We offer transparent, efficient and reliable recycling solutions to the metal, Mechanical, construction and transport service industry.  
We offer competitive prices on all metals



**WE ALSO RETAIL A WIDE RANGE OF RECYCLED METAL PRODUCTS FOR CONSTRUCTION AND RESIDENTIAL APPLICATIONS.**



# FIREQUIP

**Complete Fire Protection**

**BBBEE LEVEL 1 STATUS**

Firequip is the leading fire equipment firm in Pietermaritzburg and surrounding areas and has been in existence since 1989.

We offer a quality service, backed by personal managerial contact.

It is our belief that by giving our staff the respect and reward that they deserve, and our suppliers the support and commitment that builds lasting relationships, you our customer will be guaranteed of receiving excellent service.

As part of the Centa Group, we are able to provide a service throughout Southern Africa and specialize in national contracts.

P O Box 11951, Dorpspruit 3206  
16 St Andrews Street, Pietermaritzburg 3201  
Phone: +27 33 394 8836  
Fax: +27 86 698 6663  
E-mail: admin@centafirequip.co.za  
Website: www.centa.co.za



Fire fighting equipment and emergency signs



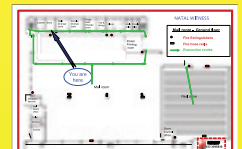
Sprinkler systems, hydrants, hose reels & fire mains



Fire alarm & evacuation systems



Basic & advanced fire & breathing apparatus training



Consultancy, emergency evacuation plans







# LOCAL COFFEE SHOP UNDERGOES AN EXCITING TRANSFORMATION



**C**offeeferry is a café in the Cascades Mall, Pietermaritzburg. Their story started in 2005 as a small eatery with unforgettable coffee. Famed for their friendly vibes and their great menu, Coffeeferry has grown into one of the most popular social and work venues in the area.

With their brand growing and customer base expanding, they needed to upgrade their interiors. A more contemporary look would set the stage for a laid-back and enjoyable coffee shop experience.

Coffeeferry's owner approached Novospace, a prestige upmarket interior design company, with

these intentions. This decision came at a time when the landlord was relocating Coffeeferry to a new position in the mall.

## THE TRANSFORMATION

The new shop offered an exciting structure to work with. Considering the trends of the industry, novospace envisioned something bold, dramatic, and more contemporary than what they had in the existing store. Raw, exposed brick and timber cladding to go with the exposed services and polished flooring would work perfectly. Novospace upcycled existing furniture to fit in with the industrial aesthetic.



Novospace opted for darker colours on the walls, one being a statement-making matt black. While there is a common idea that black creates the illusion of a smaller space, the truth is that it is a colour that recedes, therefore creating the sensation of a larger space.

Since their upgrade, Coffeeberry has been nominated for café of the year in South Africa by Coffee Magazine, alongside some big names. Coffee Magazine describes this award: *"This award goes to the establishment that has consistently created an amazing café experience for its*

*patrons, serves great coffee and food, with excellent service, has great ambience, design and most importantly, a loyal community of patrons."*

We are thrilled for Coffeeberry and eagerly await the outcome of the nominations.

**COFFEEBERRY SERVES THE COMMUNITY**

Novospace has created a coffee shop setting that's inviting, friendly, and well-designed.

Coffeeberry now serves the local community as a trendy and welcoming venue for work and social purposes. Visitors enjoy the new look, which now enhances the excellent culinary options on offer.

**ABOUT NOVOSPACE**

Novospace is an award winning interior architecture firm based in Durban and Cape Town.

Novospace offers a full turnkey design service from concept to completion. We have vast experience in residential and commercial interior design. The practice is headed by three principles with a combined experience of 85 years in the architectural and interior design field. ✨



**ADVANCED INTERIORS**

*If your kitchen is not coming to you, then you should be coming to us*

**Terrence Naidoo**

**Cell: 083 342 8006 / Fax: 031 5054838**

**Email: [advancedteal@gmail.com](mailto:advancedteal@gmail.com)**

**Specialist In Custom Made  
Kitchen Units, Built-in-cupboards,  
Shopfittings, Receptions, Vanities, Pubs,  
Sliding Mirror Doors & Revamping,  
Solid Oak, Beech, Melamine, Superwood**



**PRESENT YOUR INTABA RIDGE MAGAZINE FOR A FREE CAPPUCINO**

**Tel: (033) 347 0708**

**The Piazza @ Cascades Centre, Pietermaritzburg Kwazulu-Natal, 3201**

**[www.coffeeberry.co.za](http://www.coffeeberry.co.za)**



dare to bring your dreams to

*Life*



**SAGNELLI ASSOCIATE ARCHITECTS**

49 Richefond Circle | Suite 1 | Ridgeside Office Park | Umhlanga Rocks  
Tel: 031 536 8160 | Cell: 082 772 4426 | info@sagnelli.com  
[www.sagnelli.com](http://www.sagnelli.com)